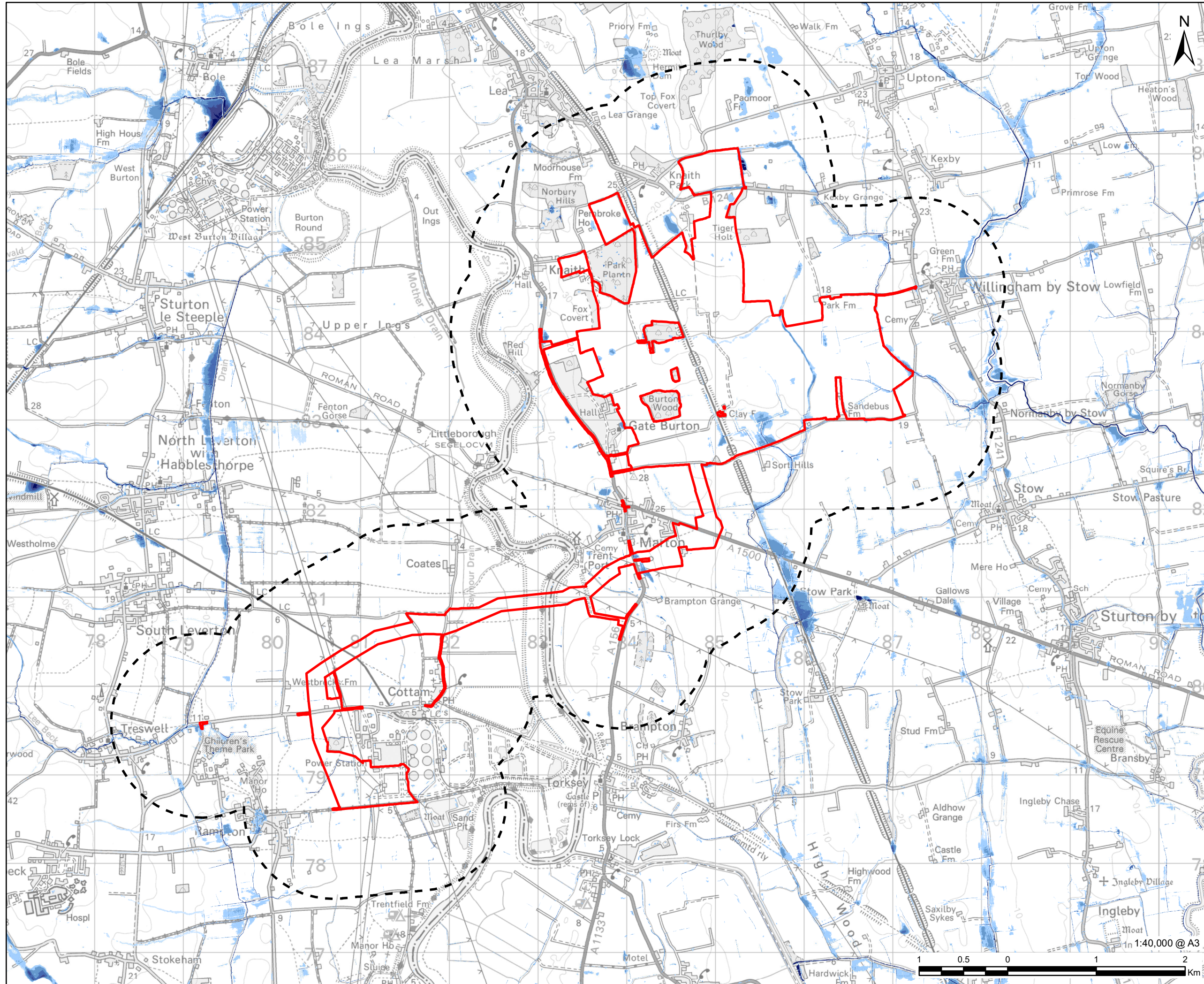


Revision: 01 Drawn: VC Checked: OT Approved: WB Date: 2022-11-24  
 Filename: I:\na.aecomnet.com\ms\EMEACroydon\UKCRD1\Legacy\UKCRD1\GIS\Projects\Gate Burton Energy Park\Map2\Environmental Statement\Chapter 09 - Water\WTR\_ES\_Figure\_3a\_HighSurfaceWaterFloodRisk.mxd



**PROJECT**  
 Gate Burton Energy Park

**CLIENT**  

 Gate Burton  
 ENERGY PARK

**CONSULTANT**  
 AECOM Limited  
 Sunley House  
 4 Bedford Park  
 Surrey, CR0 2AP, UK  
 www.aecom.com

**LEGEND**

- Order Limits
- 1km Buffer
- <VALUE>
- Below 150mm
- 150-300mm
- 300-600mm
- 600-900mm
- 900-1200mm
- Over 1200mm

**NOTES**  
 © Crown copyright and database rights 2022.  
 Ordnance Survey 0100031673. Contains  
 Environment Agency data ©. Contains public  
 sector information licensed under the Open  
 Government Licence v3.0.

**ISSUE PURPOSE**  
 Environmental Statement

**PROJECT NUMBER**  
 60664324

**FIGURE TITLE**  
 Surface Water Flood Risk - High (3.3%)

**FIGURE NUMBER**  
 Figure 9-3a

This drawing has been prepared for the use of AECOM's client. It may not be used, modified, reproduced or relied upon by third parties, except as agreed by AECOM or as required by law. AECOM accepts no responsibility, and denies any liability whatsoever, to any party that uses or relies on this drawing without AECOM's express written consent. Do not scale this drawing. All measurements must be obtained from the stated dimensions.